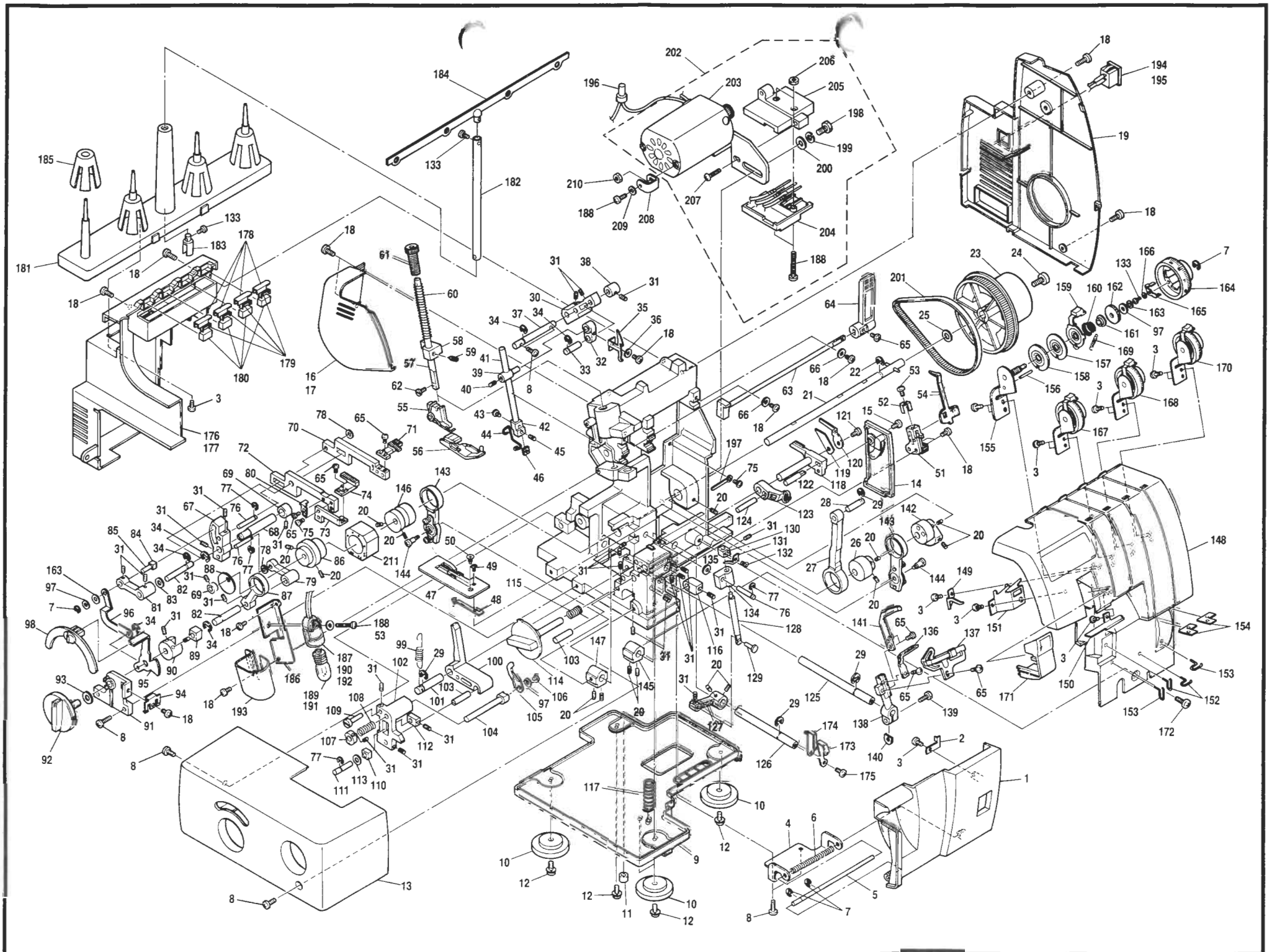


**PARTS BOOK**

FOR

**brother® Overlock Sewing Machine**

**MODEL 925D**



Ref. No.	Parts No.	Parts Name	Ref. No.	Parts No.	Parts Name	Ref. No.	Parts No.	Parts Name	Ref. No.	Parts No.	Parts Name
1	X77702001	Front cover	61	14286001	Presser adjusting screw	121	060400612	Set screw	181	X77731001	Spool stand base
2	X75632001	Front cover hook	62	126851001	Set screw	122	X76737001	Lower blade guide shaft	182	X77733001	Spool stand shaft
3	037300815	Set screw	63	X77622001	Presser looper shaft assembly	123	X77684001	Stitch width lever	183	X77734000	Spool stand shaft base
4	X77703001	Front cover hinge plate	64	X77625001	Presser foot lever	124	X76552001	Stitch width shaft	184	X77735001	Thread guide 4
5	X77704001	Front cover guide shaft	65	062300604	Set screw	125	X76330000	Over looper lower shaft	185	126863002	Spool cushion
6	127174001	Front cover spring	66	025040332	Washer	126	X77685000	Underlooper lever shaft	186	X77710000	Lamp plate
7	048030342	Stop ring	67	X77628000	Feed bar lever	127	X77689000	Overlooper shaft lever	187	X77812001	Lamp assembly 120V (U.S.A)
8	060401206	Set screw	68	X77630000	Feed bar lever shaft	128	127786001	Overlooper shaft	188	062302006	Set screw 120V
9	X77706001	Oil pan	69	X75150001	Collar	129	127785001	Overlooper lower shaft	189	X53061050	Lamp 120V
10	X75545000	Cushion A	70	X77631000	Main feed bar	130	X77772000	Overlooper base	190	X77816001	Lamp assembly 220-240 (EC)
11	X77852000	Cushion B	71	X77632001	Main feed dog	131	X77781001	Overlooper	191	205336050	Lamp 220-240V
12	X75720001	Set screw	72	X77647000	Differential feed bar	132	061300416	Set screw	192	X77850001	Lamp assembly 220V
13	X77705001	Cloth plate cover assembly	73	X77764001	Differential feed base	133	037200615	Set screw	193	X77423000	Lamp cover plate
14	X77708001	Cloth plate side cover	74	X77763001	Differential feed dog	134	X76766001	Overlooper shaft guide	194	X77820001	Switch assembly 120V
15	060400806	Set screw	75	060300806	Set screw	135	025710235	Washer	195	X77823001	Switch assembly 220-240V
16	X77709001	Lamp cover	76	127784001	Overlooper shaft guide shaft	136	X77774001	Underlooper	196	X77076001	Connector
17	X77709002	Lamp cover (Lamp Max 15w)	77	048040342	Stop ring	137	X77775001	Underlooper thread guide base assembly	197	XA0286051	Clip
18	060400606	Set screw	78	025050132	Washer	138	X77778001	Underlooper lever	198	103741001	Set screw
19	X77711000	Belt cover	79	X77638000	Feed bar link	139	017501615	Set screw	199	203735001	Spring washer
20	012500632	Set screw	80	X77649001	Feed bar guide	140	X05281001	Washer	200	100197004	Washer
21	X77601001	Driving shaft assembly	81	X77650000	Differential adjusting link	141	X75388001	Movable needle guard B	201	X77826001	Timing belt
22	048080142	Stop ring	82	X77637001	Feed bar link shaft	142	X77693000	Overlooper rod eccentric wheel	202	X77827001	Motor assembly (EC)
23	X77603001	Timing pulley	83	026060132	Washer	143	X77599001	Looper rod assembly		X77830001	Motor assembly (U.S.A)
24	X77750001	Set screw	84	X77653000	Differential feed adjusting block	144	X75317001	Looper rod stud shaft		X77833001	Motor assembly (CANADA)
25	X77604000	Washer	85	X77652000	Differential adjusting link shaft	145	X77694000	Overlooper driving lever		X77836001	Motor assembly (240V AUSTRALIA NZ)
26	X77608000	Needle bar eccentric wheel	86	X77634000	Feed eccentric wheel	146	X77698000	Underlooper rod eccentric wheel		X77839001	Motor assembly (110/220 DUAL)
27	138839000	Needle bar rod	87	X77635000	Feed link	147	X77699000	Underlooper driving lever		X77842001	Motor assembly (220V)
28	138875001	rod shaft	88	X77768000	Feed link guide	148	X77714001	Panel assembly	203	X77828001	Motor (EC)
29	048060342	stop ring	89	X77639000	Feed adjusting block	149	X77155001	Needle thread guide A		X77831001	Motor (U.S.A)
30	X77611000	Needle bar driving lever	90	X77641000	Feed adjusting lever	150	X77716001	Needle thread guide 300		X77834001	Motor (CANADA)
31	014400422	Set screw	91	X77642000	Feed base	151	X77157001	Needle thread take-up guide		X77837001	Motor (240V AUSTRALIA NZ)
32	X77660000	Needle bar connecting link	92	X77643001	Feed dial	152	127943001	Thread guide		X77840001	Motor (110/220 DUAL)
33	X75217001	Needle bar rod shaft A	93	X76687000	Wave washer	153	127778001	Thread guide		X77843001	Motor (220V)
34	048050346	Stop ring	94	X77646001	Dial plate spring	154	X77762000	Thread guide	204	X77782001	3pin socket body
35	X77612001	Thread take-up	95	X77654001	Differential adjusting lever assembly	155	X77718001	Thread tension base assembly	205	X77783001	3pin socket cover
36	028040242	Spring washer	96	X77657000	Differential adjusting link	156	047251042	Spring pin	206	021300206	Nut
37	X77613000	Needle bar shaft	97	025040232	Washer	157	X77235000	Thread tension disc	207	037401615	Set screw
38	X05286001	Collar	98	X77658000	Differential control lever	158	X77236000	Thread tension disc A	208	X77998000	Motor plate (120V only)
39	126656001	Needle bar connecting stud	99	X77749001	Feed bar spring	159	X77853001	Thread tension releaser	209	025350332	Washer
40	014600632	Set screw	100	X77661000	Upper blade link	160	X77414001	Thread tension spring	210	021400206	Nut
41	X76510001	Needle bar	101	X77663000	Upper blade link shaft	161	X75992001	Thread tension spring washer, upper	211	X77736000	Vertical feed block
42	X75205001	Needle clamp	102	X77664000	Upper blade arm	162	X76878000	Thread tension nut			
43	X76215001	Set screw	103	X77665001	Upper blade arm shaft	163	X76879000	Wave washer			
44	X75972001	Needle bar thread guide	104	X77666001	Upper blade holder	164	X77720001	Thread tension dial (yellow)		J01780051	Foot controller (120V U.S.A)
45	016400632	Set screw	105	X77668001	Upper blade	165	X76882001	Dial clutch		J01590051	Foot controller (EC)
46	X75246001	Nut	106	060400812	Set screw	166	026020235	Washer		J01664051	Foot controller (U.K)
47	X77614001	Needle plate	107	127669001	Upper blade holder guide	167	X77720002	Thread tension dial (red)		J01665051	Foot controller (Australia NZ)
48	X77618001	Fixed needle guard	108	X77669001	Upper blade presser spring	168	X77720003	Thread tension dial (green)		J01434051	Foot controller (Canada)
49	004020506	Set screw	109	X76703001	Upper blade holder guide shaft	169	X77174001	Thread tension spring S (UL only)		XA1347051	Foot controller (Germany)
50	100032003	Set screw	110	X77846000	Upper blade block	170	X77720004	Thread tension dial (blue)		X76189001	Foot controller (110/220 DUAL)
51	X77090001	Stitch holder	111	X77671000	Upper blade block shaft	171	X77724000	Thread take-up cover			
52	X77092001	Stitch plate spring	112	X77673000	Collar	172	138853001	Set screw			
53	062300406	Set screw	113	025050336	Washer	173	X77726001	Looper thread take-up A	122991002		Accessory bag
54	X77094001	Stitch tongue	114	X77674001	Blade dial	174	X77727001	Looper thread take-up B	X77128001		Hexagonal (allen) wrench
55	X77862001	Presser holder assembly	115	X77677001	Blade dial spring	175	X75721001	Set screw	X75902001		Tweezers
56	X77752001	Presser foot assembly	116	X77678000	Blade dial cam	176	X77728001	Rear cover assembly	X75917001		Needle set (#80/#90)
57	126660001	Presser bar	117	X77679001	Upper blade link spring	177	X77729001	Rear cover assembly	X75580001		Needle set (#70/#80)
58	127198000	Presser bar guide bracket	118	X77680001	Lower blade holder	178	X77679001	Thread rectifier A	127679006		Needle set (HLX5 #11/#14)
59	100058003	Set screw	119	X77683001	Lower blade	179	127392001	Thread rectifier D1	X75906001		Cleaning brush
60	X77621001	Presser bar spring	120	X77857001	Blade guide	180	XB0134000	Thread rectifier cushion	X77260000		Thread spool cap

Ref. No.	Parts No.	Parts Name
	X75904000	Thread net
	X75437001	Screw driver
	X77881001	Needle set (#80)
	123443011	Needle set (HLX5 #11)
	X77871000	Soft cover
	X77876001	Packing set
	X55468-051	Screw driver (large)
	X77283-001	Trim trap
	X76590-002	Blind stitch foot
	X76663-001	Elastic taping foot
	X76670-002	Pearl sequence foot
	X76668-002	Piping foot