

PARTS CATALOGUE

for

Model XL3000

REF. NO.	PARTS NO.	PARTS NAME	REF. NO.	PARTS NO.	PARTS NAME
1	X55874152	TOP COVER	36	X51908000	SLIDE BLOCK
2	X55848051	THREAD GUIDE ASSEMBLY	37	X55686051	SS BUTTON
3	138433051	SCREW	38	X52192051	CORD GUIDE
4	X53252051	BOBBIN WINDER THREAD GUIDE ASSEMBLY	39	138433051	SCREW
5	060300616	SCREW	40	053400806	SCREW
6	021300106	NUT	41	X55688051	BED COVER
7	X54338051	BOBBIN PRESSER	42	060401416	SCREW
8	062301616	SCREW	43	X55689051	BASE COVER
9	021300106	NUT	44	060400816	SCREW
10	X51892051	CARRYING HANDLE	45	130157051	RUBBER CUSHION
11	X54949051	CARRYING HANDLE SHAFT	46	X55690051	ACCESSORY TABLE ASSEMBLY
12	048040346	STOP RING	47	138644051	NOTCHED SPRING
13	X53629051	SPOOL PIN	48	X52769552	MACHINE COVER
14	X53630051	SPRING	49	X52762051	MEDALLION
15	X52654001	PILE	50	X57062151	UPPER SHAFT ASSEMBLY
16	027350126	WASHER	51	X50470100	TENSION CONTROL CAM
17	060400816	SCREW	52	X50537001	COLLAR
18	X55678052	FACE PLATE	53	014680632	SCREW
19	X51895051	FACE PLATE BUSH	54	048080346	STOP RING
20	X55853051	THREAD CUTTER HOLDER	55	X52663050	METAL
21	137665001	THREAD CUTTER	56	131976050	WASHER
22	062300416	SCREW	57	X57573051	ECCENTRIC COUNTER WEIGHT
23	138433051	SCREW	58	X54363051	BUSHING PRESSER
24	052401406	SCREW	59	060400816	SCREW
25	X57570051	BELT COVER	60	X55698001	TIMING BELT
26	052401406	SCREW	61	X53187051	TENSION PULLEY
27	X55681155	FRONT COVER	62	X55609001	SCREW
28	X55687052	DECORATION PLATE	63	X54364051	HANDLE SUPPORTER PLATE
29	X55854052	PATTERN INDICATION FRAME	64	X55701051	NEEDLE BAR SUPPORTER ASSEMBLY
30	X54442053	PATTERN INDICATOR PLATE	65	X51924051	NEEDLE BAR SUPPORTER STUD
31	X50223051	SPRING	66	X51920051	NEEDLE ROLLER
32	136869001	SCREW	67	014300332	SCREW
33	X55682051	SS VR BOARD ASSEMBLY	68	X55520051	POSITION PLATE
34	138433051	SCREW	69	060300516	SCREW
35	X55685052	SPEED KEY TOP	70	X55703051	NEEDLE BAR SUPPORTER STUD HOLDER

REF. NO.	PARTS NO.	PARTS NAME	REF. NO.	PARTS NO.	PARTS NAME
71	X52140051	ADJUSTING COLLER	106	060400816	SCREW
72	014400432	SCREW	107	X51931001	THREAD TAKE-UP LEVER ASSEMBLY
73	X52141051	ECCENTRIC SCREW	108	X51935001	SPRING
74	102571056	NUT	109	X51936101	THREAD TAKE-UP LEVER STUD
75	025680232	WASHER	110	048050346	STOP RING
76	X56681051	SPRING	111	X51937001	TENSION CONTROL LINK
77	136872151	NEEDLE BAR	112	X51879151	SHAFT PRESSER
78	X50109000	NEEDLE BAR THREAD GUIDE	113	062400816	SCREW
79	100139051	SCREW	114	X55737050	PRESSER BAR
80	125161080	NEEDLE GUIDE PLATE	115	137736051	PRESSER BAR SPRING
81	X53896001	NEEDLE CLAMP	116	X52689051	PRESSER BAR BRACKET
82	131226051	NEEDLE CLAMP SCREW	117	X51942051	TENSION RELEASER A
83	X52882150	THREAD POSITIONER	118	X57574051	SCREW
84	014400432	SCREW	119	048050346	STOP RING
85	X56822051	NEEDLE BAR CRANK ROD ASSEMBLY	120	X51943151	PRESSER FOOT LIFTER
86	014680432	SCREW	121	X51944051	STUD FOR PRESSER FOOT LIFTER
87	100507050	METAL PLATE	122	062401205	SCREW
88	060400816	SCREW	123	X52653051	TENSION RELEASE PLATE C
89	X50476051	SPRING	124	120454051	STOP RING
90	X50480051	NEEDLE BAR CRANK	125	X51946051	SPRING
91	X50483051	STUD SCREW	126	120454051	STOP RING
92	X51163001	WASHER	127	129855001	PRESSER FOOT HOLDER ASSEMBLY
93	X54817102	HOOK ASSEMBLY	128	X51953001	ZIGZAG PRESSER FOOT
94	100028014	NEEDLE #14	129	132730151	SCREW
95	X51926051	STUD SHAFT	130	X56831050	FEED ARM
96	048025346	STOP RING	131	X50521050	FEED ARM SHAFT
97	X51927000	NEEDLE BAR SUPPORTER ARM	132	X50522151	SET COLLAR
98	014400432	SCREW	133	048050346	STOP RING
99	X55858151	NEEDLE PLATE ASSEMBLY	134	014400432	SCREW
100	X55859151	NEEDLE PLATE	135	X50546050	WASHER
101	X55860151	INNER ROTARY HOOK PRESSER	136	X51949000	HORIZONTAL FEED LEVER
102	X50657051	STICKET	137	X50531050	HORIZONTAL FEED LEVER SHAFT
103	061300416	SCREW	138	014400432	SCREW
104	137727051	SLIDE PLATE	139	X51956051	SLIDE BLOCK STUD
105	X50487051	SCREW	140	048030346	STOP RING

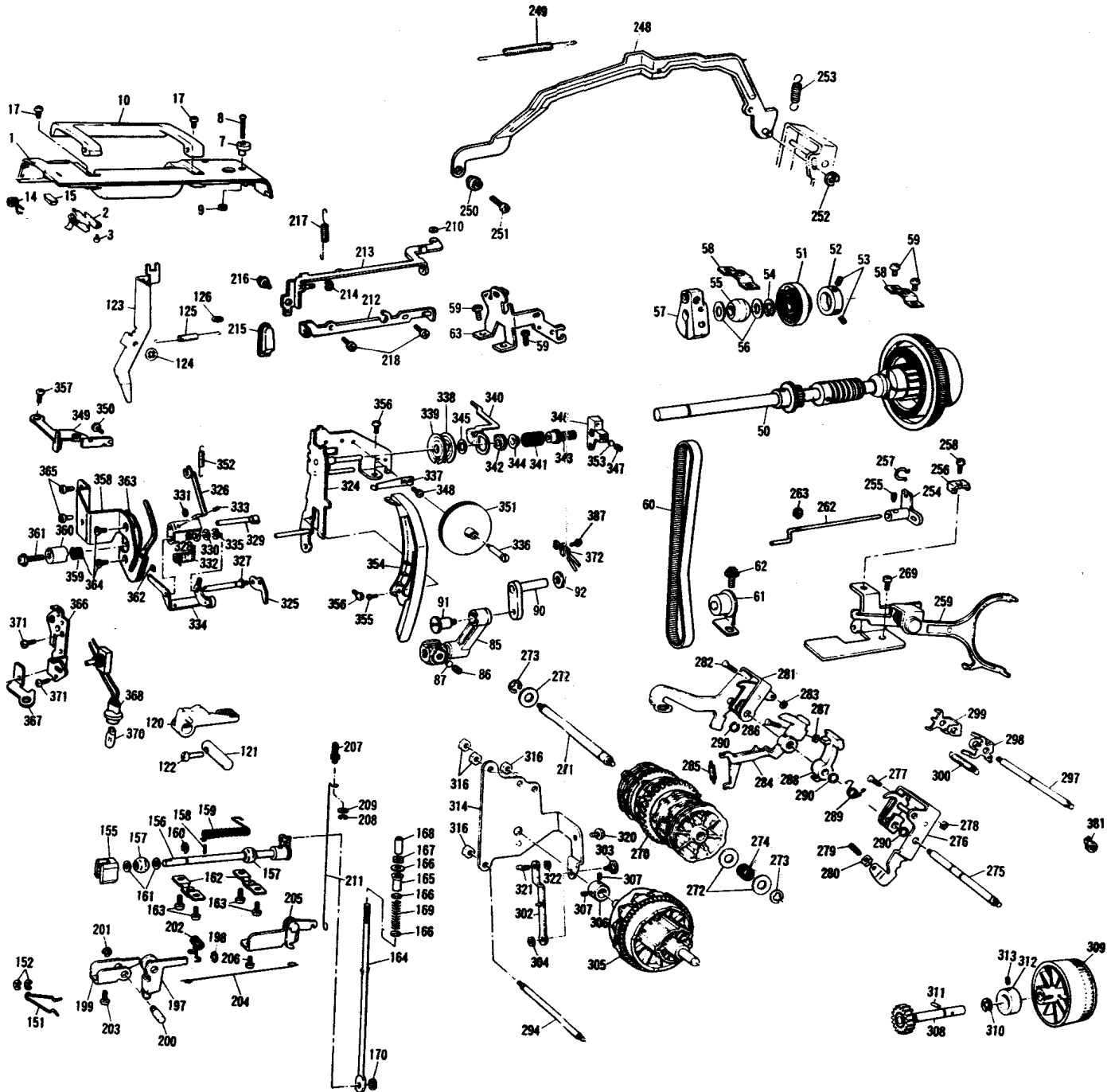
REF. NO.	PARTS NO.	PARTS NAME	REF. NO.	PARTS NO.	PARTS NAME
141	X55712050	FEED BAR	176	X54979051	SPRING
142	X50525001	VERTICAL FEED FINGER	177	048040346	STOP RING
143	014400432	SCREW	178	060400416	SCREW
144	X55713051	FEED DOG	179	X54726051	BH ADJUSTING ECCENTRIC STUD
145	060300516	SCREW	180	128491051	WASHER
146	X52883051	SPRING	181	048050346	STOP RING
147	X52188051	FEED BAR SHAFT	182	X57150051	SPRING WASHER
148	X55862051	PRESSER PLATE	183	X51973051	BH ADJUSTING LEVER
149	060400816	SCREW	184	048030346	STOP RING
150	X51951050	DROP LEVER SHAFT	185	X55865051	FEED GEAR B
151	X52219151	SPRING	186	025050132	WASHER
152	048030346	STOP RING	187	048040346	STOP RING
153	X55862051	PRESSER PLATE	188	116662003	WASHER
154	060400816	SCREW	189	060401416	SCREW
155	X50719001	FEED REGULATOR ASSEMBLY	190	X51978051	SPRING
156	X55715051	FEED REGULATOR SHAFT ASSEMBLY	191	X53971051	BOBBIN WINDER ASSEMBLY
157	X52766050	BUSHING	192	120448051	BOBBIN WINDER RUBBER RING
158	X50912001	PIN	193	120263051	STUD SCREW
159	X54831051	SPRING	194	102571056	NUT
160	048050346	STOP RING	195	X52102051	SPRING
161	X50546050	WASHER	196	060400816	SCREW
162	X54780151	BUSHING PRESSER	197	X51980151	REVERSE SEWING LEVER C
163	060400816	SCREW	198	081004070	RUBBER RING
164	X57419051	FEED REGULATING BAR	199	X51982051	SHAFT PRESSER
165	X52618050	COLLAR	200	X51983151	STUD
166	025680133	WASHER	201	048030346	STOP RING
167	102571056	NUT	202	X51984051	SPRING
168	X51958051	ROCK SCREW	203	060400816	SCREW
169	120110051	SPRING	204	X51985051	CONNECTING BAR A
170	048030346	STOP RING	205	X51986051	REVERSE SEWING LEVER B
171	X55720051	FEED BRACKET PLATE ASSEMBLY	206	060400816	SCREW
172	137992051	SPRING	207	X51990151	ADJUSTING SCREW
173	X51965051	FEED DIAL GEAR	208	048020346	STOP RING
174	014400432	SCREW	209	132950001	WASHER
175	X51968156	FEED DIAL ASSEMBLY	210	102571056	NUT

REF. NO.	PARTS NO.	PARTS NAME	REF. NO.	PARTS NO.	PARTS NAME
211	X55727051	CONNECTING BAR B	246	014400632	SCREW
212	X55866051	REVERSE SEWING HOLDER ASSEMBLY	247	136492151	BOBBIN
213	X55867051	REVERSE SEWING LEVER ASSEMBLY	248	X55738151	ZIGZAG CONNECTING ROD ASSEMBLY
214	048030346	STOP RING	249	X55868051	SPRING
215	X55732052	REVERSE SEWING BUTTON	250	X50559050	Z ADJUSTING NUT
216	136869001	SCREW	251	062301006	SCREW
217	X55733051	SPRING	252	048040346	STOP RING
218	060400816	SCREW	253	X52005051	SPRING
219	X55741051	LOWER SHAFT ASSEMBLY	254	X54456151	BH CHANGE ARM ASSEMBLY
220	X52664050	LOWER SHAFT BUSHING	255	014400432	SCREW
221	X51383050	WASHER	256	X56420051	BH NOTCHED SPRING PLATE
222	048060346	STOP RING	257	136997051	NOTCHED SPRING
223	137767151	SET COLLAR	258	060400816	SCREW
224	X52752001	LOWER SHAFT GEAR ASSEMBLY	259	X56421151	BH STOPPER ASSEMBLY
225	014400632	SCREW	260	X57576051	BH STOPPER PLATE ASSEMBLY
226	X55429000	VERTICAL FEED CAM	261	X54462051	BH LEVER HOLDER ASSEMBLY
227	X50741050	PIN	262	X54464151	BH CHANGE SHAFT
228	X50742000	HORIZONTAL FEED CAM	263	048025346	STOP RING
229	X50743000	REVERSE SEWING CHANGE STOPPER	264	048050346	STOP RING
230	X50744050	SPRING	265	X54461051	SPRING
231	132434050	WASHER	266	060400616	SCREW
232	X52001151	NP SHUTTER	267	131428051	BH LEVER PLATE
233	014400050	SCREW	268	060400616	SCREW
234	X54780151	BUSHING PRESSER	269	060400816	SCREW
235	060400816	SCREW	270	X52006201	PATTERN CAM ASSEMBLY
236	X52487051	OUTER ROTARY HOOK ASSEMBLY	271	X52016051	PATTERN CAM SHAFT
237	137823051	NEEDLE GUARD	272	128491051	WASHER
238	060020316	SCREW	273	048050346	STOP RING
239	X57035051	INNER ROTARY HOOK ASSEMBLY	274	X52017051	SPRING
240	137804151	OUTER ROTARY HOOK SHAFT	275	X52040251	FINGER SHAFT
241	X53183051	WASHER	276	X54473051	Z FINGER FRAME ASSEMBLY
242	X54134001	INNER ROTARY HOOK BRACKET	277	120258051	SCREW
243	060400616	SCREW	278	021670102	NUT
244	137805051	WASHER	279	125322051	SCREW
245	137976001	WASHER	280	021670102	NUT

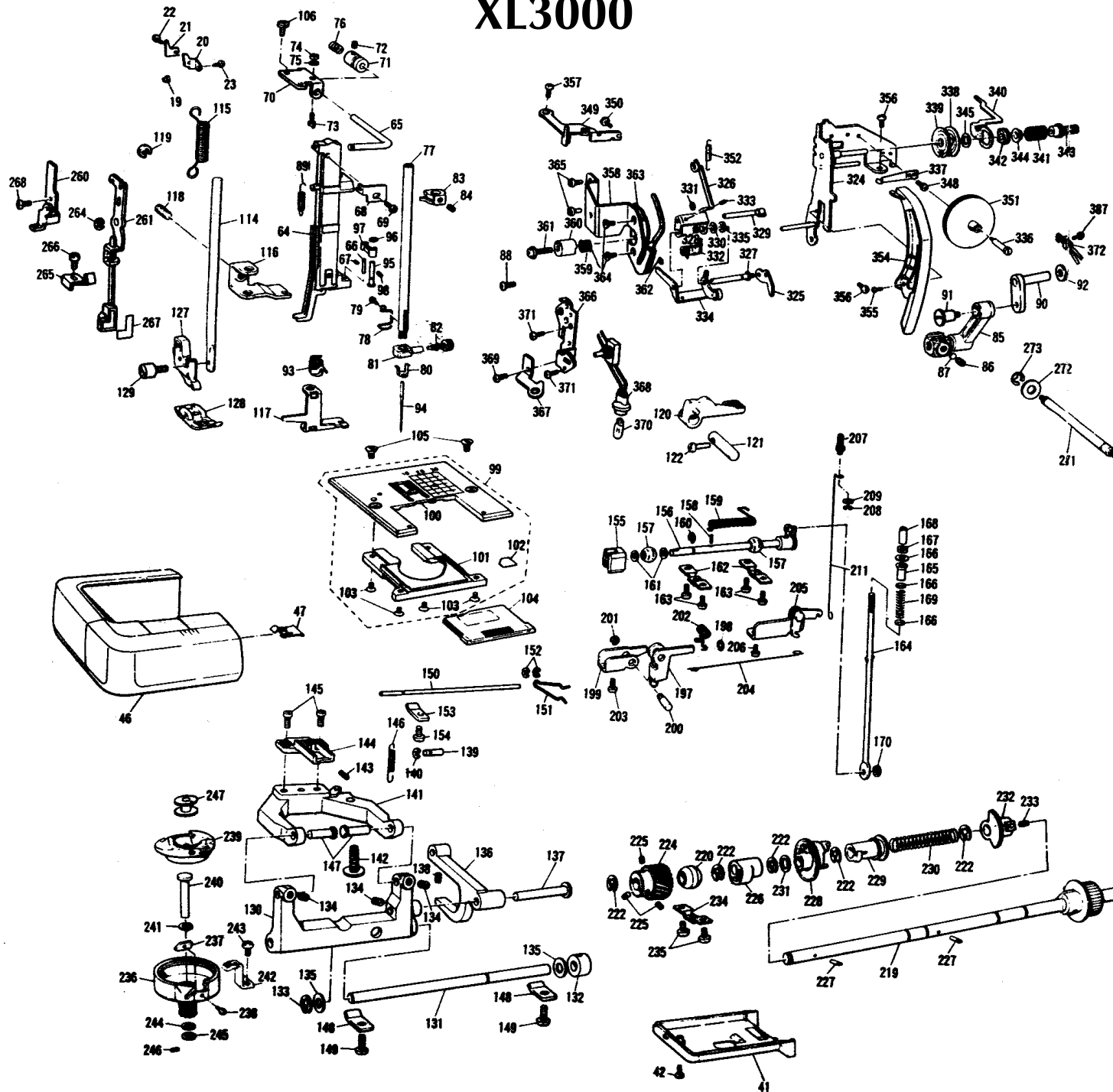
REF. NO.	PARTS NO.	PARTS NAME	REF. NO.	PARTS NO.	PARTS NAME
281	X52047051	F FINGER FRAME ASSEMBLY	316	021400202	NUT
282	120258051	SCREW	317	X55744050	INDICATION GEAR
283	021670102	NUT	318	X52088051	COLLAR
284	X52053051	BHF FINGER ASSEMBLY	319	014400632	SCREW
285	X52058051	SPRING	320	060400616	SCREW
286	120258051	SCREW	321	X54017151	ADJUSTING SCREW
287	021670102	NUT	322	102571056	NUT
288	X52059151	BHZ FINGER	323	060400816	SCREW
289	X52060151	SPRING	324	X57581051	THREAD GUARD ASSEMBLY
299	137191051	STOP RING	325	X52108001	THREAD GUIDE
291	X54991051	RELEASE LEVER	326	X52110001	THREAD CONTROL LEVER
292	120258051	SCREW	327	X56891001	STUD SHAFT
293	021670102	NUT	328	048030346	STOP RING
294	X52063151	RELEASE SHAFT	329	X52256001	ADJUSTING SHAFT
295	X52064051	SPRING	330	025040133	WASHER
296	048040346	STOP RING	331	048020346	STOP RING
297	X52065051	SLIDE FRAME SHAFT	332	X52116001	SPRING
298	X52066151	Z SLIDE FRAME	333	014400432	SCREW
299	X52067051	F SLIDE FRAME	334	X54997001	TENSION CONTROL COLLAR PLATE
300	X52068151	SPRING	335	117851001	SPRING WASHER
301	X53074151	Z SELECTING LEVER	336	X52120051	TENSION DIAL SHAFT
302	X52070151	F SELECTING LEVER ASSEMBLY	337	X52121001	NOTCHED SPRING
303	X52073051	STUD SCREW	338	129376001	TENSION DISC
304	021400202	NUT	339	108263001	TENSION DISC
305	X57074001	SELECTING CAM ASSEMBLY	340	X52122051	TENSION RELEASER B
306	X52077051	COLLAR	341	X50701001	SPRING
307	014400432	SCREW	342	137881051	TENSION DISC WASHER
308	X53067051	SELECTING GEAR	343	X50765151	THREAD TENSION CONTROL SCREW
309	X52080051	PATTERN SELECTING DIAL	344	X50702000	SPRING WASHER
310	048050346	STOP RING	345	109763003	WASHER
311	047251242	SPRING PIN	346	X52123000	TENSION CONTROL NUT
312	130096151	COLLAR	347	014400432	SCREW
313	014400632	SCREW	348	062300416	SCREW
314	X52091151	UNIT BASE B ASSEMBLY	349	X55756051	THREAD GUARD SUPPORTER PLATE
315	X54501051	UNIT BASE F	350	060300616	SCREW

REF. NO.	PARTS NO.	PARTS NAME	REF. NO.	PARTS NO.	PARTS NAME
351	X52119005	TENSION DIAL	386	X55734051	BOBBIN WINDER SWITCH ASSEMBLY
352	X52883001	SPRING	387	062260516	SCREW
353	138607000	WASHER	388	X57064001	TIMING BELT
354	X55755052	THREAD GUARD COVER	389	X55609001	SCREW
355	062300616	SCREW	390	J01231051	MOTOR COMPLETE
356	060400816	SCREW	391	141291-	CONTROLLER COMPLETE
357	060400816	SCREW		03690	
358	X57584001	THREAD TAKE-UP SPRING HOLDER		128585051	ZIPPER FOOT
359	X52466001	THREAD TAKE-UP SPRING		X50597051	BRUSH
360	132305001	THREAD TAKE-UP SPRING CASE		X54243001	SEAM RIPPER
361	602394001	SCREW		136492151	BOBBIN
362	X52905000	SPRING STOPPER		X57117051	NEEDLE SET
363	X56937001	THREAD TAKE-UP SPRING HOLDER		X57521001	TWIN NEEDLE
364	061300416	SCREW		X51205102	BUTTON HOLE FOOT
365	060400816	SCREW		122335081	BUTTONING FOOT
366	X57586051	LAMP HOLDER		130012053	SPOOL PRESSER A
367	X54746051	SOCKET HOLDER		130013053	SPOOL PRESSER B
368	X54782051	LAMP SOCKET ASSEMBLY		X53189001	PRESSER FOOT
369	060400616	SCREW		131865051	FEED COVER PLATE
370	X50228081	SEW-LIGHT BULB		130920051	SPOOL PIN
371	060400816	SCREW		X55467051	SCREW DRIVER M
372	X54585051	REVERSE SWITCH ASSEMBLY		194310011	INSTRUCTION BOOK FOR XL3000
373	X57806051	POWER SUPPLY PC BOARD ASSEMBLY		X50018001	POWER SUPPLY CORD ASSEMBLY
374	X55757051	SWITCH HOLDER		X60277051	CARTON BOX FOR XL3000
375	X52737151	INLET SPRING		X60177150	STYROFOAM
376	X51271001	NUT		X60271050	STYROFOAM FRONT
377	X54605151	INSULATION BOX		X60272050	STYROFOAM RAER
378	X54606051	INSULATING COVER		X60018050	STYROFOAM L
379	U06923002	SCREW		X60019050	STYROFOAM R
380	052401406	SCREW			
381	X53169050	BAND			
382	414959001	WIRE CLIP			
383	X54786150	CORD GUIDE			
384	060400816	SCREW			
385	060400816	SCREW			

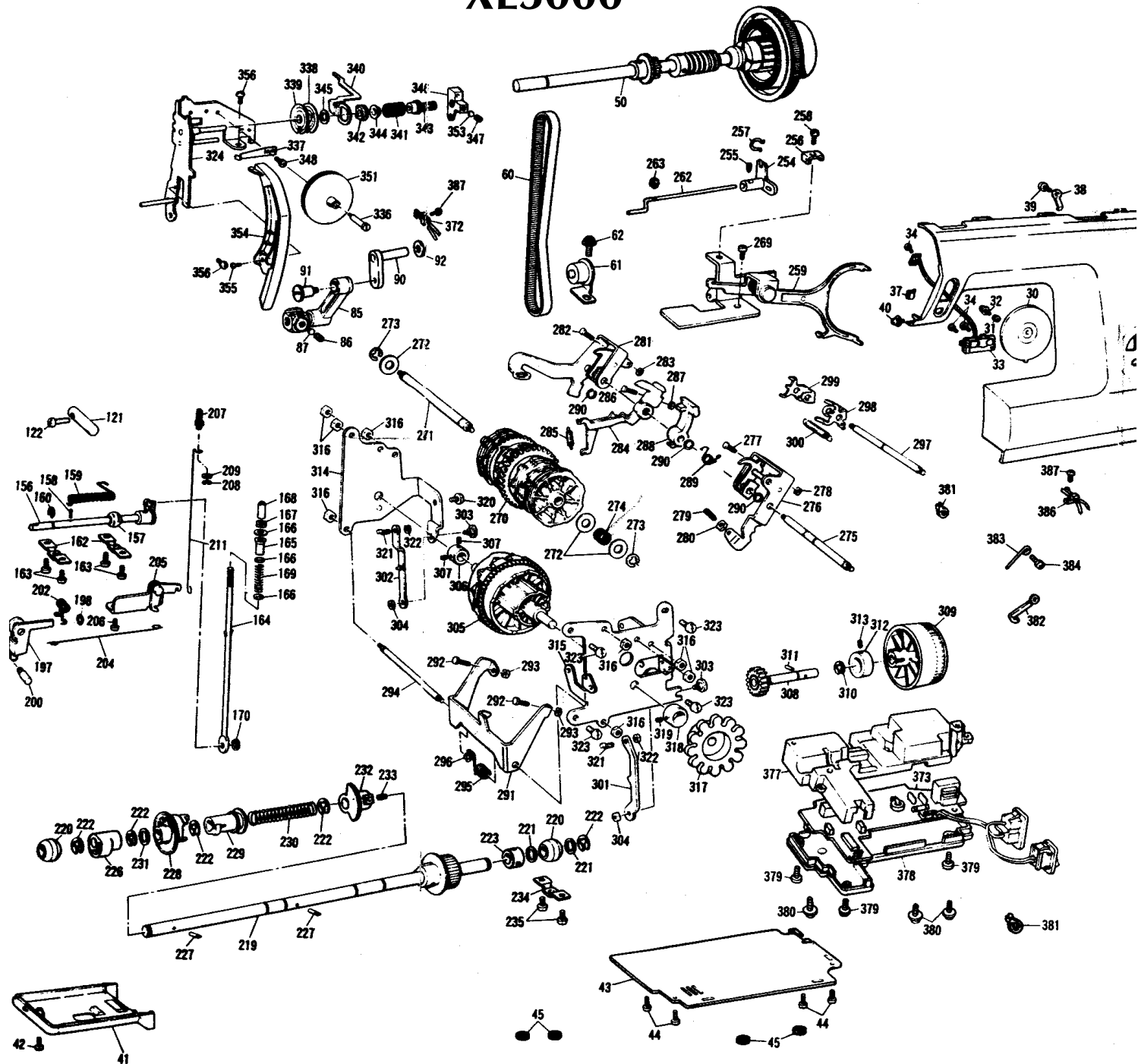
XL3000



XL3000



XL3000



XL3000

